

## THROUGH THE GRAPEVINE

April 2019

The Official Publication of the Master Gardeners of Ocean County Inc. Produced in cooperation with Rutgers Cooperative Extension Service

### INSIDE THIS ISSUE:

President's Message	2
Coordinator's Message	3-4
Important Dates	5
Pant Sale	6-7
Charlene's Corner	8-9
Plant of the year	10
MG Bus trip PFS	11
Committee Reports	12-14
Recipe	15
Guess the MG	16
Pro Mix order form	17
GV Swap & Shop	18

**Master Gardeners  
Officers & Board Of Directors  
2018-2019**

**President**

**Jim Digney**

**1st Vice President**

**Jerry Jellerts**

**2nd Vice President**

**Mary Townsend**

**Treasurer**

**Alison Del Rio-Stellita**

**Rec Sec General Mgt**

**Susan Reese**

**Rec Sec Exec Board**

**Noreen Baris**

**Corresponding Sec**

**Roberta Quinn**

**Trustees**

**Joan Haldane  
Georgina Price  
Holly Yocum**

## PLANT SALE MAY 4, 2019

**"Think Spring in 2019"** is our theme for the Annual Plant Sale!! Spread the news to your friends, family and neighbors that the Ocean County Master Gardeners are growing outstanding beautiful plants. The Greenhouse team will have many interesting plants including *Senecio* 'Angel Wings' and *Ipomoea* (Moonflower.) The Wright House will have tomatoes, 'Shikoku' eggplant and 'Serrano' peppers as well as herbs. The big news for this year is that we will be accepting credit cards for the first time.

We need about 100 MG and Intern volunteers to make the plant sale a success. Help is needed to set up the AG Center parking lot on Wednesday May 1<sup>st</sup> and Thursday May 2<sup>nd</sup>. On Friday May 3<sup>rd</sup> drivers are needed to transport plants from Ocean County Park, load, unload & set up plants at the AG Center.

On the day of the sale MGs are needed to take down riser shelving and tables once the sale is over. Volunteers for take down do not need to arrive until 12:45 pm on Saturday May 4<sup>th</sup>.

Everyone working the Plant Sale on Saturday May 4<sup>th</sup> must wear their ID badge. Also, wear a hat, bring sunscreen, wear comfortable shoes and bring a lawn chair. Water will be provided. Feel free to bring a cooler with ice.

Sign-up sheets and Plant Sale Flyers will be available at the April 4<sup>th</sup> General meeting. Spouses and friends who might be interested in helping out at the Plant Sale are greatly appreciated and must be signed up as "Ocean Knights."

Volunteers not attending the meeting can contact me [pncnurse@aol.com](mailto:pncnurse@aol.com) to let me know how you would like to help.

Thank you for all you do and for your support and dedication.

Plant Sale 2019 Co-Chairs, Sue Masoorli & James Digney

# President's Message by Jim Digney



If you haven't heard yet, we've had a catastrophic event in the Green House and we lost close to 90% of the plants that were being grown for the plant sale. At this point I don't know what we can do. I will tell this though..... April Fools!!

As I write this, it's a little cool out, but the sun is shining brightly and signs of spring are all around. Walking around the neighborhood, I see green shoots sticking their noses out of the ground everywhere I look. It does my heart good. Color is coming back into the world and into our lives. The grey and brown background we have endured for the last few months is changing into hues of red, green, and yellow. The ground is softening, awakening from its winter slumber and giving up its precious jewels that it's been nurturing in the form of spring flowers. It's clear sailing now. The light at the end of the tunnel has burst through into the daylight and the dark clouds have rolled away. We made it!! It's spring and all is right with the world.





## Gardening Journey-

By Susan Emhardt-Servidio



The intern class is finishing up with five more classes this month. This group asks great and insightful questions and are ready to volunteer. Some have started at the Park and are enjoying the experience. We did have one intern who is unable to finish class due to family reasons, but she was thrilled to be invited back to join next year's class.



2019 SLF Update- Stan Gill with Extension of U. of Maryland reported that Spotted Lanternfly (SLF) nymphs should start hatching around 240 growing degree-days, so I will be watching IPM's reports for GGD tallies. The SLF are confirmed in Maryland and northwestern part of Virginia too. This critter is on the move. Project volunteers have identified over 60 stands of Tree of Heaven in Ocean County. No presence of SLF have

been seen. We will be looking for nymphs as May and June roll in and again for adults as season progresses.

The Community Garden Network of Ocean County is holding a potluck dinner meeting and IPM class on April 9<sup>th</sup> from 6:00pm - 8:00pm. Phyllis and Vinnie will be presenting IPM in the garden. Good for 2 EDU, and it's free.

Riverwood Park Project (RWP) with Community Garden Network of Ocean County (CGN) is getting started on Saturday, April 13, 2019. CGN with help from RMGs and other volunteers will begin with cleaning and preparing the Community garden at RWP at 9:00am-12:00pm. In addition, as you start your spring-cleaning, if you have at home an abundance of tools, and need to cull the herd, you could donate the tools to the project. If you'd like to volunteer 'to get down and dirty' with the clean-up or have tools to donate, email me- [sservidio@co.ocean.nj.us](mailto:sservidio@co.ocean.nj.us).

I'm working on a date at the end of May with Gary Pavlis for our 3<sup>rd</sup> annual Cream Ridge Winery tour and tasting. More information to come.

Road trip to Steve Kristoph Nursery on April 24th. Email me if interested- [sservidio@co.ocean.nj.us](mailto:sservidio@co.ocean.nj.us).

The Ocean County Fair is running from July 10-14<sup>th</sup> at Robert J. Miller Airpark. We will have a 10' x 10' area under the 4-H tent for Thursday July 11<sup>th</sup> from 5pm-10pm. The area we will occupy should be part display and part interactive. So far, I have no volunteers to take on this event. I have been asked a few times in the past two years, why don't we still have a presence at the Ocean County Fair. Those that have asked, please volunteer to work this event.- call or email me if interested- [sservidio@co.ocean.nj.us](mailto:sservidio@co.ocean.nj.us).

## Gardening Journey cont.-

A Butterfly Tent Event is coming to Ocean County! (Well, if Sue M., Phyllis D and I have time to bring the event into being.) Date for event will be Saturday and Sunday, August 10 & 11 from 1:00pm-4:00pm here in the Ag Center's front lot. This event will be geared toward children and adults. I know the plant sale is coming, so I will be forming a group to work with us on the BF Tent event after the Plant Sale. If you have an interest in helping plan or work this event, please email me - [sservidio@co.ocean.nj.us](mailto:sservidio@co.ocean.nj.us).



### Ocean & Monmouth join forces

On March 26th, Monmouth county MG Interns joined our interns for the All important "pesticide" class. Lots of food, fun and learning!





# I • M • P • O • R • T • A • N • T



## April

- April 1 - Stafford Helpdesk, meeting at 12:30, opens season 1pm
- April 3 - Diagnostics Training, 10-12, 1-3, signup with office
- April 4 - General meeting, 1:15, **HOURS DUE**
- April 5 - Cuisine cleanup, weather permitting
- April 8 - IPM, 1-3pm, Ag. Center
- April 9 - Display Garden, 9:30 – 12:30, just come
- April 9 - Intern Helpline Training, Mentors take note
- April 17 - Board of Directors meeting, 9:15  
Executive Committee meeting, 10:30
- April 19 - Office closed**
- April 23 - Display Garden, 9:30 -12:30
- April 24 - Steve Kristoph Nursery visit

## May

- May 1-3 - Plant sale prep. See notice
- May 4 - Saturday PLANT SALE DAY
- May 9 - Pot luck Luncheon, noon, register w. Jim Digney
- May 14 - Display Garden
- May 15 - Board of Directors meeting, 9:15  
Executive Committee meeting, 10:30
- May 16 - Soil Compaction Wksp 10 -12, Ag. Center, Dr. Steve
- May 27 - Office Closed**
- May 28 - Display Garden 9:30
- May 29 - Winery tour & tasting w/Gary Pavlis



## The Ocean County Master Gardeners Directory

is in  
the "Library" under  
"MG Documents"  
on our website?



Visit Our Website

[www.mgocnj.org](http://www.mgocnj.org)

## 22nd Annual Barnegat Bay Environmental Educators Roundtable

**When** Wednesday, April 17, 2019 from 3:00 PM to 8:00 PM

**Where**

Lighthouse Center for Natural Resource Education

140 Camp Lighthouse Road

(Corner of 7th St. and Navajo Dr.)

Waretown, NJ 08758

Click here to  
**Register Now!**

Deadline  
April 12th

For questions, please contact Becky Laboy,

Education Outreach Specialist, [education@soildistrict.org](mailto:education@soildistrict.org) or (609) 971-7002 ext. 114.



# PLANT SALE WEEK



**Plant Sale Day on Saturday May 4<sup>th</sup>:**

**Beverages and snacks will be available for the early risers and until 12:45 pm for breaks.**

**Please coordinate break times with your area Chairperson.**

**You are welcome to bring snacks to share.**

**MGs park at Juvenile Services Building parking lot.**

## **IMPORTANT CONTACTS**

Plant Sale Committee: Sue Masoorli 732-250-6472 [pncnurse@aol.com](mailto:pncnurse@aol.com)  
Jim Digney 732-606-2950 [james.digney@verizon.net](mailto:james.digney@verizon.net)

Set-Up: Joe Scutro 732-232- 6026 [scutro@aol.com](mailto:scutro@aol.com)  
Peter Ascolese 732-318-8102 [peter\\_ascolese@verizon.net](mailto:peter_ascolese@verizon.net)

Transport: Chuck Labelson 732-928-8831 cell 732-539-9613

Emergencies: Susan Servidio 732-349-1246 [SServidio@co.ocean.nj.us](mailto:SServidio@co.ocean.nj.us)

## **SCHEDULE FOR THE WEEK of April 29th**

### **Monday April 29<sup>th</sup> & Tuesday April 30<sup>th</sup>**

Joe & Peter will gather materials from the park and transport to Ag Center

Final work days at OC Park: Preparing potted plants, arranging for transport, final pricing, etc.

### **Wednesday May 1<sup>st</sup>- Set up Plant Sale area**

8am – 12pm Double fencing placed around the sale area. Close off at end of day.

### **Thursday May 2nd**

#### **SET-UP PLANT SALE AREA & TRANSPORTATION**

Ag Center - Risers and raised tables will be installed.

Transportation of Perennials & Shrubs from park.

Note: We need volunteers at the Park and the Ag Center

8:00am - Ag Center: Team will complete set-up of Plant Sale area. After set-up, Sue Masoorli will contact Chuck, Transportation Captain at the Park to let him know the Ag Center is ready to receive perennials and shrubs.

10:00am - Park volunteers meet at the Park to help prepare perennials and shrubs for loading. Park volunteers will remain at Park to load.

10:00am - Park drivers report to Park. Park volunteers load vehicles and drivers transport shrubs and perennials to the Ag Center parking lot. (Not any earlier, unless called.)

10:00am - Ag Center: parking lot volunteers report to the Ag Center to assist with set-up, if necessary, and await plant delivery from Park to unload plants.



**Plant Sale continued on next page**



## Plant sale cont.

**Friday, May 3rd**

### **TRANSPORTATION OF SPECIALTY ANNUALS & HERBS**

9:00am - Park: Drivers report to Park, where Wright House plants will be loaded. Drivers transport plants to the Ag Center parking lot. Greenhouse workers will load vehicles with specialty annuals themselves & they will be transported to AG Center separately. After the last load, everyone goes to Ag Center

9:00am - Workers report to Ag Center parking lot to complete set up and unload

12pm – 1:30pm Sale for Health Dept. Building & Ag Building workers only.  
They must show ID at the gate to purchase plants.

1:00pm - Ag Center delivery continues until done.

7:00pm - Ag Center: Security arrives

**Saturday May 4th**

(6:30am until the job is done) Plant Sale Day

6:30am - 8:30am Everyone sign in at Ag Center Auditorium when you arrive to get pins. After 8:30am, sign in at RMG table in parking lot. Sign out at RMG table when you leave.

7:00am - I & G annuals delivery.

Unload & set up risers. Roberta and team will accept delivery of annuals.

Other volunteers will set out signage, finish arrangement of plants, and add final touches.

8:00am: Noreen Baris will meet with cashiers and cashier/sales assistants to go over final details.

8:00am: Sue Masoorli will meet with floaters for final assignments

8:30am: All volunteers staff their stations

9:00am: Sale begins

Salespeople, cashiers, and all volunteers are ready for the public. All MGs wear MG name tags and MG shirts. Interns wear name tags. Aprons with pockets will be on loan for cashiers

1:00pm- END OF SALE - MGs may shop for Plants after customers have left.

12:45pm - Take-Down begins

At end of day, all equipment and grounds must be cleared before we go home.

All materials taken from the Park must be returned to the Park at breakdown time.

**Sunday May 5th**

If necessary, volunteers and vehicles will complete break-down tasks from Saturday.





Reprinted from GV Sept. 2014

## Charlene's Corner By Charlene Costaris Deer in the Landscape April 2019

Last night I sat and watched 5 fawns dashing in circles through my backyard. They were beautiful; leaping fluidly through the grass and woods. Their mothers watched quietly, grazing on the trees and lawn, and judging whether my flowers were ready to eat.

From today's perspective, it's hard to believe that by 1900, deer were nearly extinct in New Jersey. Oh, for the good old days. We banned hunting and restocked deer and killed their predators and the deer population rebounded with a vengeance. Deer are edge species. They like woods with clearings, and they are beautifully adapted to living in the suburban sprawl we're so fond of in New Jersey. Once we stopped hunting them, deer proliferated. It is estimated that there are over 100,000 deer in New Jersey today, and now we're in the position of trying to prevent deer from eating our landscapes and wrecking our cars.



Connecticut AES

The perpetrator



deerfence.com

6' x 150' steel hex deer fence kit

For openers, don't ever feed deer. My neighbor feeds deer because he "likes to see them." It makes me crazy. The deer his food attracts also browse the landscape in my yard. This is not good. And of course, the deer are spreading deer ticks, adding to the misery of working outdoors and increasing the chance of getting Lyme disease.

Feeding can actually be harmful to deer. The symbiotic microorganisms on which deer depend to digest their food may not be able to adjust to supplemental food. In that case, feeding deer can kill them. And if they can digest the supplement, well-fed females can breed at a younger age, and they have a higher ratio of twins and triplets than deer living on natural foods. Don't ever feed deer.

You can fence deer out, if it's practical on your property. You need a fence at least 8 feet tall. Although they can jump higher, they usually won't unless they're frightened. There are tons of types of deer fence, including black poly mesh "invisible" fence, high-tensile wire, and electric fence. Fences may be useful in a large-lot woody setting, but fence isn't always the answer. I had friends who lived in the woods who put circles of fencing around beds. To me, caged plants are unattractive. I'd rather go for repellents and deer resistant plants.

Charlene's Corner Continued on next page



Do repellents work? Some do, sometimes, for some people, for some length of time, and depending on how hungry the deer are. Research has been done on deer repellents. For example, researchers in Connecticut compared 10 repellents in preventing deer browse on yews. The urine-based, dried blood, and taste repellents worked less well than those based on putrescent egg solids. Bobbex gave protection 93% as good as a fence, Hinder gave 83%, and Liquid Fence gave 78% protection. Bobbex and Liquid fence are among repellents featuring putrescent egg solids with other ingredients. Hinder was ammonium salts of fatty acids and could be used on some edible plants, but it has been discontinued. If there is a replacement, I didn't find it.



amazon.com

Liquid Fence Deer & Rabbit repellent



Mother Earth News

Bobbex Deer repellent

As the researchers pointed out, you need to consider not only efficacy but also cost, frequency and ease of application. Bobbex was applied 25 times per season, while Liquid Fence was applied 13 times. Bobbex required careful sprayer cleaning to eliminate clogs, while Liquid Fence was simpler to use. You also need to be committed to following the spray schedule. I've had good results with Liquid Fence, but I have trouble with self-discipline toward the end of the summer. Liquid Fence and some others come in concentrated form. The concentrate is nasty to handle, but concentrates reduces cost. You need also to be aware that "putrescent egg solids" is code for "smells like rotten eggs". And it does when you first spray. Very close neighbors may not appreciate the perfume and should be carefully educated in advance. I usually spray in the evening, and I find that the scent is powerful that night, less so the next morning, and unnoticeable in 24 hours.

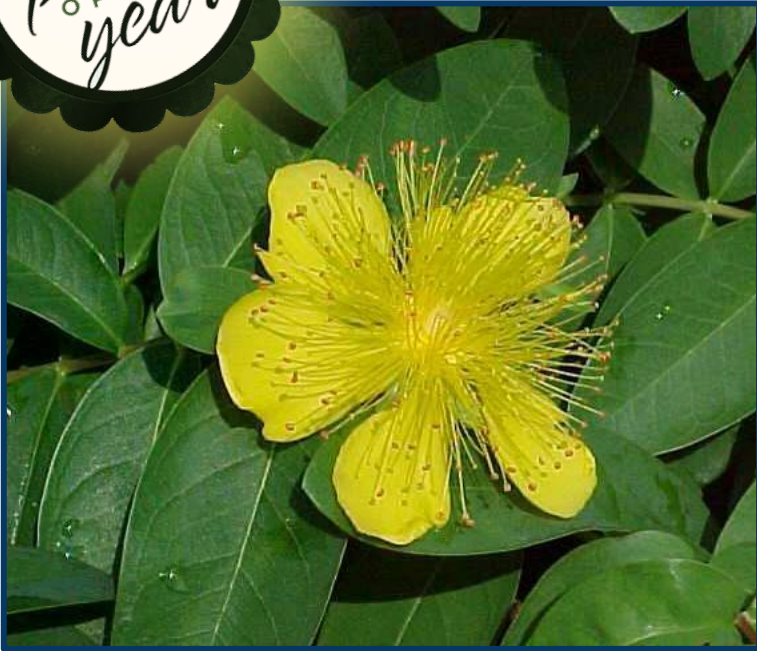
There is a tension between our love of native plants and our wish to plant deer-resistant landscapes. We want the natives to feed the birds and butterflies and to support pollinators and beneficial insects, but deer love native plants. It makes sense, really. The native plants and the deer evolved together and it's only logical that deer would eat the food their ancestors learned was safe and nutritious. Deer actually encourage invasive plants in the forest because they prefer to browse the natives. There's even a program of fencing patches of woods to allow native plants a chance to grow high enough to resist deer browse.

There are plants deer like less than others, and planting them can increase your landscape's deer resistance. Stay away from deer candy like hosta, tulips, American arborvitae, and wax begonias in favor of ferns, daffodils, juniper and ageratum. There is an excellent Rutgers list rating a wide variety of plants on their attractiveness to deer. It's in our files and on the web at <http://njaes.rutgers.edu/pubs/publication.asp?pid=e271>



# Hypericum 'Hidcote'

## St. John's Wort



*Hypericum 'Hidcote'* is one of the most popular and reliable hypericums, bearing masses of golden yellow flowers up to 5cm across, throughout summer and into autumn. Dense and busy, it's perfect for growing in a mixed or shrub border. Plants of the genus *Hypericum* (some spices have been used since ancient times in the treatment of wounds and inflammations) were apparently gathered and burned to ward off evil spirits on the eve of St. John's Day, thus giving rise to the genus common name of St. John's Wort.

'Hidcote' is a compact, deciduous shrub that typically grows to 4' tall and 4' wide. It will die to the ground in the winter or can be pruned to the ground in the spring. Blooms will be on new growth. Grow *Hypericum 'Hidcote'* in moist but well drained soil in full sun or partial shade, ideally sheltered from the cold, drying winds.

The *Hypericum 'Hidcote'* is a low maintenance and hardy shrub known for attracting bees with its nectar-pollen-rich flowers.

Complete and return this order form with payment to:

**Susan Riis 411 Poplar Street Lakehurst, NJ 08733**

Please make your checks payable to **MGOC, INC.**

**Deadline: April 24th at 4:00pm**

**Cost:\$10.00 each**

Name: \_\_\_\_\_

Email: \_\_\_\_\_

Phone # \_\_\_\_\_

Check payment type – Cash \_\_\_\_\_ or Check \_\_\_\_\_

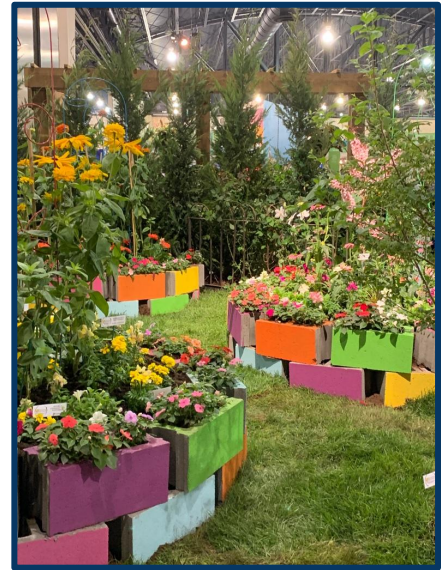
Check# \_\_\_\_\_ Amount \_\_\_\_\_ Quantity of Plants \_\_\_\_\_

Pickup Friday, May 3rd between 1pm and 3pm at Ag. Center





Master Gardeners  
Bus Trip March 4th  
PFS 2019



FLOWER POWER







# Committee reports



## IPM Committee

Vinnie Delia, Phyllis Delesandro

We all know that there are new rules about IPM workshop hours. IPM Workshops are training hours and are therefore under **Other** category. This training will help when doing diagnostic tasks where MGs interact with the public to solve their pest problems.

In order to perform this task, we'll need to frequently sharpen our diagnostic skills. IPM Workshops are a perfect arena for this. The Workshops are inclusive, fun and non-stressful. The Virtual IPM offered at the Workshops will help you identify insects, weeds and disease, as well as beneficial insects. It will also get you thinking about the less toxic approach towards plant health care.

Working with the public can be challenging. Some clients may feel like we are walking encyclopedias instead of perpetually learning volunteers. Retaining everything we see and hear throughout the year as Master Gardeners is not easy, and, no one is expected to know it all. However, IPM Workshops can be empowering, and also raise your confidence level.

Workshops introduce and familiarize you with *where to find the answers*, so you will feel comfortable telling someone with a pest problem "I will look this up, research it, and get back to you with an answer."

The next IPM Workshop will be held on Monday April 8th at the Ag Center beginning at 1pm.

The Workshop is filling up so get your name in.

You can sign up for IPM Workshops by email at:

[vcdelia@aol.com](mailto:vcdelia@aol.com)

The IPM Creed

**"Prescription without diagnosis is malpractice"**

## Sunshine Committee

Judith Richtmyer

The Sunshine committee had a very busy month in March. With this in mind, if you have a request please **Email** the MGs name and reason to me. This way I can be sure to spread the love in the right direction with the correct sentiment.

[jsalzlein@verizon.net](mailto:jsalzlein@verizon.net)



**Know a  
Master Gardener  
that needs  
a little  
pick me up?**



# Committee reports



## Speakers' Bureau

Suzanne Keane

We have fulfilled 10 requests this year. There are 7 presentations in April which are posted on the website. The full list is updated and posted on the bulletin board outside the MG room on the day of our General Meeting. As of 3/23, there are 16+ scheduled through October. Requests continue to come in to the office. If you have a topic you would like to develop or one we have on our list you are willing to present to our residents, please contact me at [MGSue06@gmail.com](mailto:MGSue06@gmail.com).



We always welcome new members. You don't have to be a RMG Educator to speak for Speakers' Bureau. Come aboard!

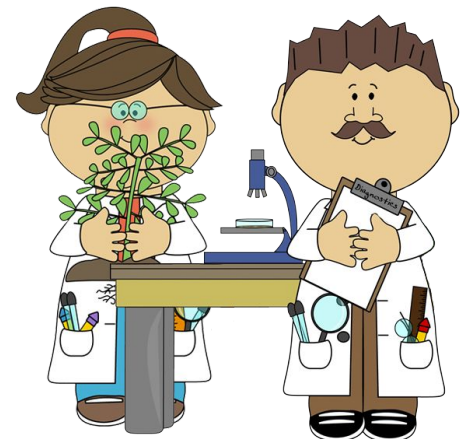
## Diagnostics

**Chair- Debra Scavuzzo Co-Chair - Tom Barnes**

Thank you all that attended the March 11 Diagnostic Training Sessions. Since it was so popular, I have added an afternoon session for April 3 if you still want to sign up.

Front Desk Diagnostics will be Monday and Friday from May to August. The shift is from 11am to 3pm for now. Any Certified Master Gardener who has attended Diagnostic Training sessions (March 11 or April 3) is welcome to sign-up. There will be a sign-up at the General Meeting. After the meeting the calendar will be in the Master Gardener Room. We will be doing a few Diagnostics Outreach events that will be announced soon. Check your MG e-mail!

The first Outreach Diagnostics event ( aka "Ask A Master Gardener" )will be at the Cattus Island Nature Festival on Saturday, April 27,2019 from 10am -4pm. I will need 1 volunteer for AM and 1 volunteer for PM. Please email [gardengurl1955@yahoo.com](mailto:gardengurl1955@yahoo.com) or call 732-244-8001 Debra Scavuzzo if you have been to the training and wish to volunteer. This is a good training experience. We will have seasonal Diagnostic Roundtables from March to October 2019 so that we may stay up-to-date on our skills and knowledge. Get ready to bring in samples and share. We want to try a new concept for learning. Everyone gets to participate! We would like to welcome Jerry Eckhart as a member of the Diagnostics Team! Thank you, Jerry, for stepping up to help man the helm. Who will be next to join the team?



Debra Scavuzzo  
Tom Barnes  
Jerry Eckhart  
Diagnostics Team





# Committee reports



## Helpline Services

Susan Emhardt-Servidio, Lead



The Intern Helpline Services training will be held on April 9<sup>th</sup> from 9:30 to 12:30. Veterans may attend the training and the hours are listed under other.



## Community Outreach Events

Peggy Mott, Barbara Grieco

The March 13<sup>th</sup> Community Outreach Events “Show and Tell” workshop went well and we want to thank everyone who participated – and, also thanks to the Committee members who explained the various elements to a community outreach event! The Community Outreach Event Guidelines are posted on the mgocinc.org web site under community outreach event committee site.

We now have approximately 48 events scheduled and for April, the April 27<sup>th</sup> Beer Fest in Beach Haven still needs volunteer support. The full schedule will be available at the April General Meeting.



The new herb display board

# Oh Betty Chocolate Cake

## Ingredients:

- 1 box chocolate cake mix
- 1 box chocolate instant pudding
- 4 lg. eggs
- 1C half and half
- $\frac{2}{3}$  C water
- $\frac{1}{2}$  C melted coconut oil
- 1.5 Oz. or 2- 25gm. bars dark 70% cocoa



Preheat oven 350 degrees

Line the bottom of 2 loaf pans with parchment and spray with oil.

Chop Cocoa in a Cuisinart to a fine meal by pulsing.

Mix the chocolate cake mix with the package of instant chocolate pudding mix.

Add eggs, half and half, water and melted coconut oil. Combine well.

Stir in Chopped Cocoa.

Bake at 350 degrees for about 50 minutes.

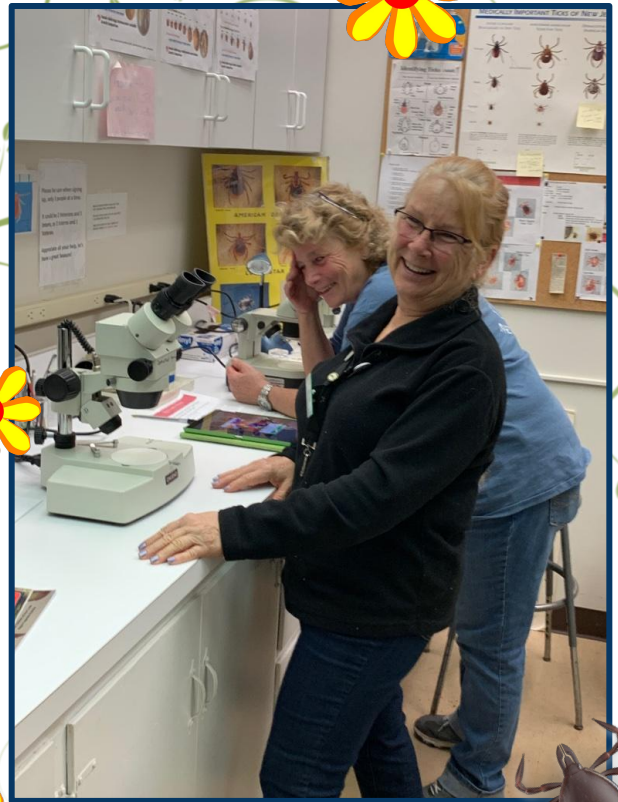
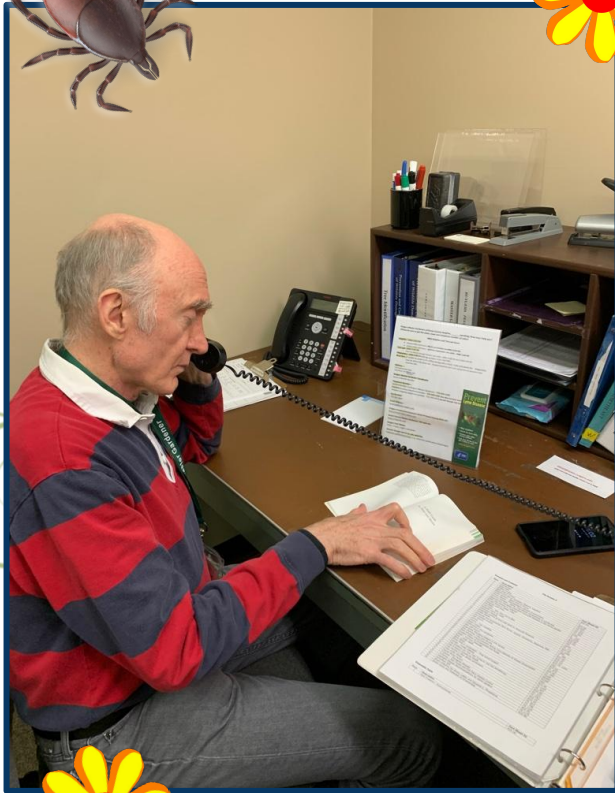
Enjoy!

**Thank You Betty H. for sharing this requested recipe!**





# HELP LINE AND TICK LAB



**OPEN FOR BUSINESS!**



**?? ??**  
**GUESS THE  
MYSTERY GARDENER  
AND WIN A PRIZE!**

Second correct guess will win a prize.  
Email your answers to the address  
below.  
Good Luck!

Submit your childhood pic to [Doggieshop@aol.com](mailto:Doggieshop@aol.com) to be our next "Mystery Gardener"





**PLEASE** place your order and mail your check, to be received by Jim Digney no later than **Wednesday APRIL 3th.**

**Pick up** of your PREPAID Pro-Mix will be **Friday April 12th** at the Ocean County Park Garden. Time of pick-up will be between the hours of 1:00 p.m. and 3:00 p.m. IF you cannot comply with this pick-up date, **PLEASE** make other arrangements with either me or Noreen. Many thanks.

*Noreen and Jim*

-----

Name \_\_\_\_\_

Phone Number \_\_\_\_\_ E-mail \_\_\_\_\_

Number of Bales Requested \_\_\_\_\_ Check Number \_\_\_\_\_

Total Amount of Your Check (\$35.00 each bale) \_\_\_\_\_



**Please make your checks payable to MGOC, INC.**  
Mail to Jim Digney 565 Cranmore Drive, Brick N.J. 087230



**1st quarter hours must be in  
the book by  
3pm April 4th**





Visit Our Website

<https://www.mgocinc.org>

Editor: Phyllis Delesandro

Proofreaders :  
Suzanne Keane,  
Charlene Costaris,  
Susan Emhardt-Servidio  
Photographer:  
Joan Haldane  
Historian: Richard End

**Policy:** Permission is granted to non-profit organizations to reprint original material appearing in this newsletter on condition that (1) both the author and this publication are credited and (2) a copy of your publication is sent to Dr. Steve Yergeau, c/o The Master Gardeners Program, RCE of Ocean County Agricultural Center, 1623 Whitesville Rd. Toms River, N.J. 08755

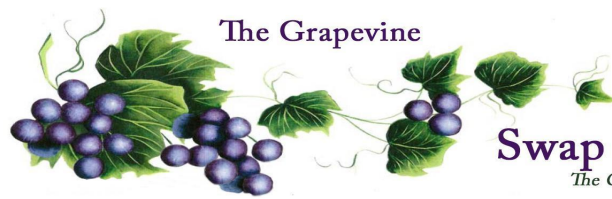
*Rutgers Cooperative Extension is an equal opportunity program provider and employer. Contact your local extension Office for more information regarding special needs or accommodations. Contact the State Extension Director's Office if you have concerns related to discrimination, 848-932-3584*

**RUTGERS**

Cooperative Extension  
of Ocean County  
Agricultural Center  
1623 Whitesville Road  
Toms River, NJ  
08755-1199

Phone: 732-349-1246  
Fax: 732-505-8941  
Helpline: 732-349-1245  
E - mail:

[oceanag@njaes.rutgers.edu](mailto:oceanag@njaes.rutgers.edu)



**Swap & Shop**  
*The OCMG Classified*

All ads should contain type of transaction (Wanted, Free, For Sale or Trade), your name, price, picture and contact information. Contact

Phyllis Delesandro [doggieshop@aol.com](mailto:doggieshop@aol.com)

**Wanted:** Your old or misfit spoons, forks and a few knives for Intern Hospitality. Thank You - Contact Phyllis Delesandro [doggieshop@aol.com](mailto:doggieshop@aol.com)

**For Sale:** Raised Cedar Planter on Wheels - 39 1/2 X 17W X 34 1/2 H  
Please contact Dorothy Cinkosky 732-849-1170



## Display Garden Work Party

**Looking good!**



**Join the fun -**

**next work party April 9th!**

**LAST MONTH'S MYSTERY GARDENER...**

**SUZANNE KEANE**

Congratulations

**Kath G**

Please pick up your Prize from  
Debbie Fuentes.

